



EMBRACING RESILIENCE  
& SUSTAINABILITY FOR  
LASTING IMPACT

## 2024 Annual Report



Christ-Centered



Church Driven



Child-Focused





**Publication Date:** April 2025

**Editor:** Dr. Issaka Kiemtore

**Technical writer:** Emmanuelle B. Boco

**Photography:** Jehojakim Sangare

**Contributor:** Brama Ouattara, Harouna GNESSIEN

**Layout and Design:** RadysCom



# Table of Contents

List of Abbreviations 04

Leadership Remarks 05

National Leadership Team 07

About Compassion International 09

CIBF Fiscal Year 2024 at a Glance 11

Key Achievements 14

CIBF 20<sup>th</sup> Anniversary Celebration 27

The School of Husbands And Future Husbands 29

Financial Statements 32





# List of Abbreviations

Child and Youth Development Centers	CYDC
Compassion International Burkina Faso	CIBF
Frontline Church Partner	FCP
Highly Vulnerable Children	HVC
Human Immunodeficiency Virus	HIV
Income Generating Activity	IGA
Limited Program Interventions	LPI
National Center for Forest Seeds	NCFS
Water Sanitation and Hygiene	WASH





# Leadership Remarks



Dear Readers,

The theme of this annual report ***"Embracing Resilience and Sustainability for Lasting Impact"*** encapsulates our commitment for holistic child and youth development in Burkina Faso during the past 20 years of services and our willingness to bear more fruits with lifelong impact on Program participants. Looking back, we are so grateful to the Lord for significant milestones achieved in partnership with the church.

Amidst both challenges and triumphs, we have witnessed the unfailing support of the Lord and the unwavering resilience of Program participants we serve. Their strength and determination continue to inspire us, reinforcing stakeholders' commitment to fostering environments where they can thrive. Our various child protection, food security, livelihood, health, education, parenting interventions have been intentionally tailored not just to meet participant's immediate needs but also to build long-lasting foundations that support personal growth and community well-being.

Sustainability remains at the heart of our mission. We understand that true impact is achieved through practices that endure over time. Various initiatives like Child protection campaigns, school of husbands and future husbands, youth mentorship programing, church partners preparation,

Frontline Church Partners capacity building and reinforcement, etc. have been designed to be adaptable and scalable, ensuring that the bene-

fits we deliver today will continue to grow and support future generations. By integrating local knowledge, building strategic partnerships, and enhancing resource mobilization and management, we aim at creating a sustainable framework for success.

the current security and humanitarian context of our country has led us to develop relief and rehabilitation interventions for the participants, caregivers and communities in the affected areas.

This report highlights the achievements and stories that embody our dedication to holistic child and youth development. From innovative educational programs to community-driven projects, each section reflects our collective efforts to drive positive change. We are grateful for the support of our partners, donors, and volunteers, whose contributions have been instrumental in realizing our vision.

As we look to the future, we remain committed to our core values and mission. Embracing resilience and sustainability will guide our path forward, allowing us to expand our impact and support even more children and youth. We invite you to explore this report and join us in celebrating the progress we have made together.

Thank you for your continued support and partnership.

**Dr. Issaka KIEMTORE**  
National Director



Skatvi





# National Leadership Team



**Dr. Issaka Kiemtore**  
**National Director**



**Phoebe Lankoande**  
**Senior Manager of  
Program Support**



**Kafo Inoussa Bene**  
**Senior Manager of  
Partnership**



**Roger Soubeiga**  
**Senior Manager of  
Business Support**



**Ramata Sakande**  
**Senior People and  
Culture Strategic Partner**





# About Compassion International

Compassion International is a faith-based child and youth development organization working since 1952 to deliver spiritual, economic, social, and physical care to babies, children, and young adults in poverty across 29 countries including Burkina Faso.

Compassion's ministry started in Burkina Faso in February 2004. Although the country facts and statistics might tell stories of hardship about children vulnerability, Compassion is making a difference by bringing hope in the life of one child at a time through a variety of targeted interventions and responses related to survival, early childhood, childhood and youth development.



## Our Mission

Releasing children from poverty in Jesus' name

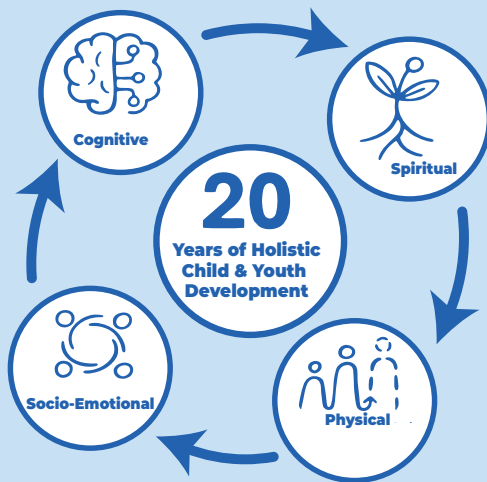
## Our Core Values

At Compassion International, we value:

- **Integrity**
- **Discernment**
- **Dignity**
- **Excellence**
- **Stewardship**




# Years of Services and Presence



 **12** Regions

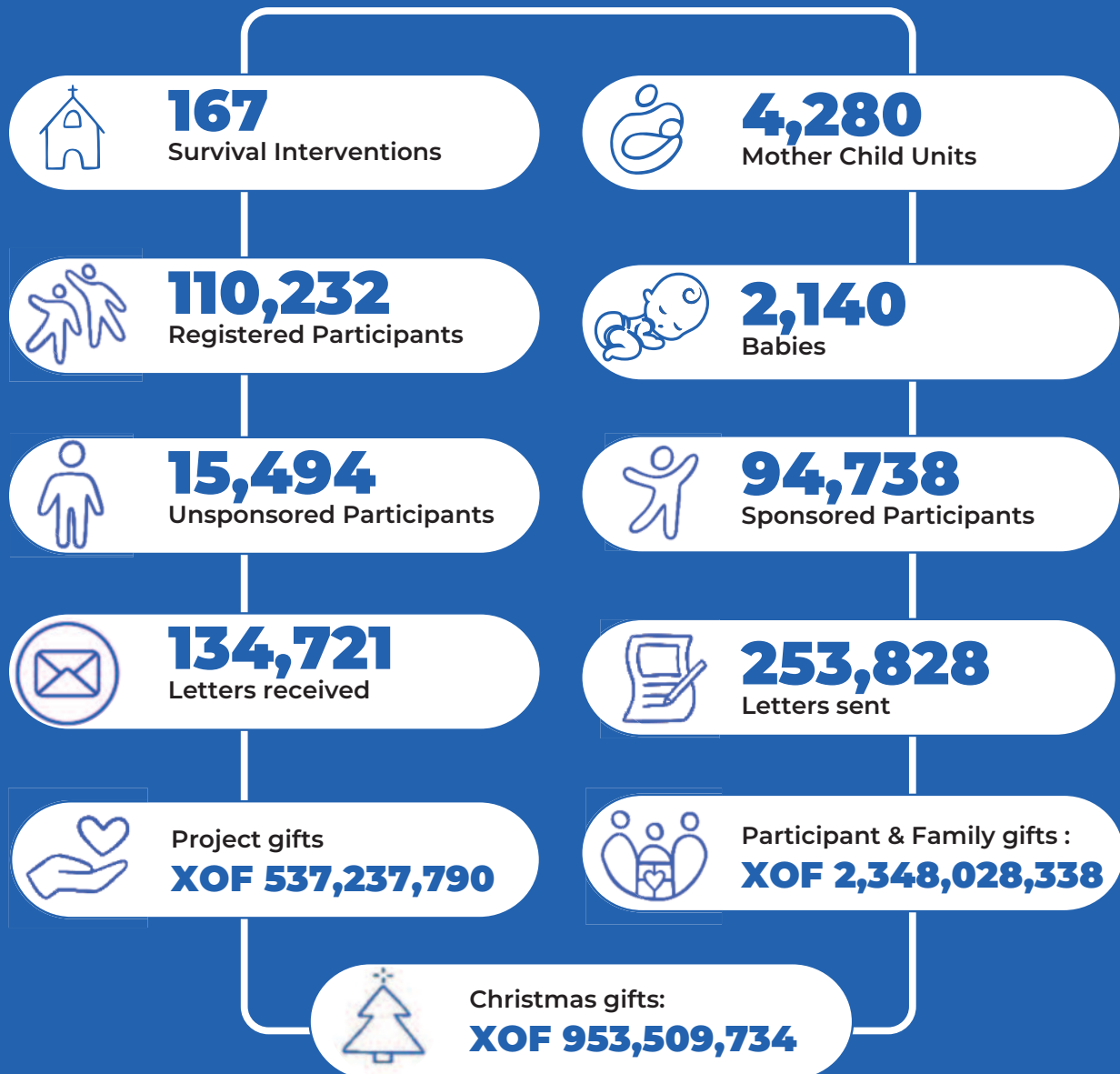
 **33** Provinces

 **476** Frontline Church Partners



# CIBF Fiscal Year 2024 at a glance

## Survival & Sponsorship Facts



# Partnerships, LPI and youth Development



**240** Potential Church Partners were involved in **10** Qavah workshop to strengthen community engagement, promote collective ownership, and emphasize the use of local resources.



**49** FCPs have implemented Limited Program Interventions (LPI) to maintain partnerships and ensure minimum programming including health, hygiene, nutrition, child protection, education, and life skills development services to Participants.



**37** New partnerships were officially established resulting in the launch of **37** child and youth development centers for the holistic development of **8,029** in central and western Burkina



**11,000** children and their families received food assistance, healthcare and hygiene kits



**3** youth Discipleship Forums were held in eastern, Central and Western Burkina Faso congregating a total of 15 Discipleship Organizations and **1,686** Church partners and program participants.



**825** Program youth and actors' capacity was built on Your One Degree approach to improve their self-esteem and unlock their talents and their full potential.



# Complementary Interventions

**41** Complementary Interventions Implemented

**59,271** Participants reached

**XOF 1,721,116,250** Disbursed including



## EDUCATION

**XOF 411,000,000**

Formal education  
**5,669** children and youth

**XOF 458,790,000**

Non-formal education  
**5,660** children and youth



## WASH

**XOF 332,996,000**

**22** Boreholes  
**3,336** children and communities

**XOF 193,212,500**

**44** latrines, toilets, sinks  
**14,581** children and youth



## SOLAR ENERGY

**XOF 70,552,000**

**2** solar energy projects  
**2,776** registered children



## HEALTH

**XOF 50,40 5,000**

Health promotion and awareness  
**22,646** children and youth

**XOF 62,184,080**

**3** doses vaccines against hepatitis B  
**6,205** children and youth

**XOF 72,141,700**

Vaccines against meningitis  
**4,648** children and youth

**XOF 42, 657, 350**

Mosquito nets LLIIMN  
**6860** children and youth



## Disaster relief funds

**XOF 1,562,371,000 :**



## FOOD ASSISTANCE

**3,000** tons of food distributed  
9,750 families including  
1088 internally displaced  
non-program families

**4,764** caregivers trained on best  
agricultural practices



## FERTILIZERS & SEEDS

**365.85** tons of fertilizers and  
seeds distributed  
**4, 764** families



## IGA

**3,569** caregivers trained  
on income generating activities

**3,569** caregivers received  
revolving funds to launch  
income generating activities

## Livelihood and Food Security



## HVC

**1,251** highly vulnerable children  
(HVC) received food assistance  
for **12** months



## FOOD ASSISTANCE

**XOF 173,100,000 disbursed**  
for food assistance to highly  
vulnerable children



## SAVING GROUPS

**428** saving groups  
developed

**XOF 253,362,488** mobilized



# KEY ACHIEVEMENTS





# Child protection





## Child protection

Child protection is a central focus of Compassion International Burkina Faso's mission. The organization upholds strict child safeguarding policies aligned with international standards and national laws to prevent and respond to abuse. In 2024, over 75,000 individuals were trained on child protection awareness and response, and nearly 30,000 signed a formal commitment to child protection. Advocacy efforts, including awareness campaigns and partnerships with govern-

ment and faith-based leaders, targeted issues like sexual abuse, early marriage, and teenage pregnancy. Initiatives included youth club formation, mental health support in insecure areas, and the use of digital tools like the Resolver platform to report abuse. Compassion's efforts aim to build a safer, more respectful environment for all children.

In Fiscal Year 2024, key efforts included:

**195**

new staff and contractors trained at the National Office level.

**16**

youth clubs were created to strengthen youth-led protection efforts.

**900**

children and youth from potential partner churches engaged in awareness workshops.

**135**

young people were trained to lead activities within these clubs.

**20**

Partnership Facilitators trained to use Resolver, an online abuse reporting platform.

**387**

church and community leaders were equipped with knowledge on child rights and legal frameworks.

**183**

staff in insecure areas trained on psychosocial support for internally displaced people.



An advocacy campaign was also launched in Southwest Burkina Faso to combat sexual abuse, early marriage, and teenage pregnancy, involving community leaders, program participants, and government partners. Key activities included radio broadcasts, a youth march to deliver a memorandum to the Governor, and a regional conference. The

initiative was endorsed by the Catholic Archbishop of the region.

Through these efforts, Compassion International Burkina Faso aims to foster a protective, respectful, and empowering environment for all children and youth across the country.



# **Health, Nutrition, Water, Hygiene and Sanitation**





## Health, Nutrition, Water, Hygiene and Sanitation



In Burkina Faso, malaria remains the leading cause of illness and death, followed by waterborne diseases. In response, Compassion International Burkina Faso has integrated targeted interventions in health, nutrition, water, hygiene, and sanitation (WASH) into its five-year national strategy. This seeks to improve the well-being of children and their families by ensuring access to medical care, mental health support, proper nutrition, and clean water. ASH initiatives include the construction of toilet facilities, borehole drilling for safe drinking water, and hygiene education with kits distribution. Compassion works with strategic technical partners to ensure effective, sustainable, and inclusive interventions that consider gender balance, disability, child protection, and environmental stewardship.







**XOF 254,565,750** Mobilized for Health Promotion, Immunization and Heart Surgery including

**6,205** Children have received 3 Doses Vaccines against Hepatitis B

**4,648** Children were Immunized against Meningitis

**6,860** Mosquito Nets LLIIMN distributed to **3430** children

**15,496** Children were screened for Sickle Cell

**22,646** Children attended health promotion and awareness sessions

**3** Children have successfully undergone heart surgery

**82,157** Children benefited from deworming tablets

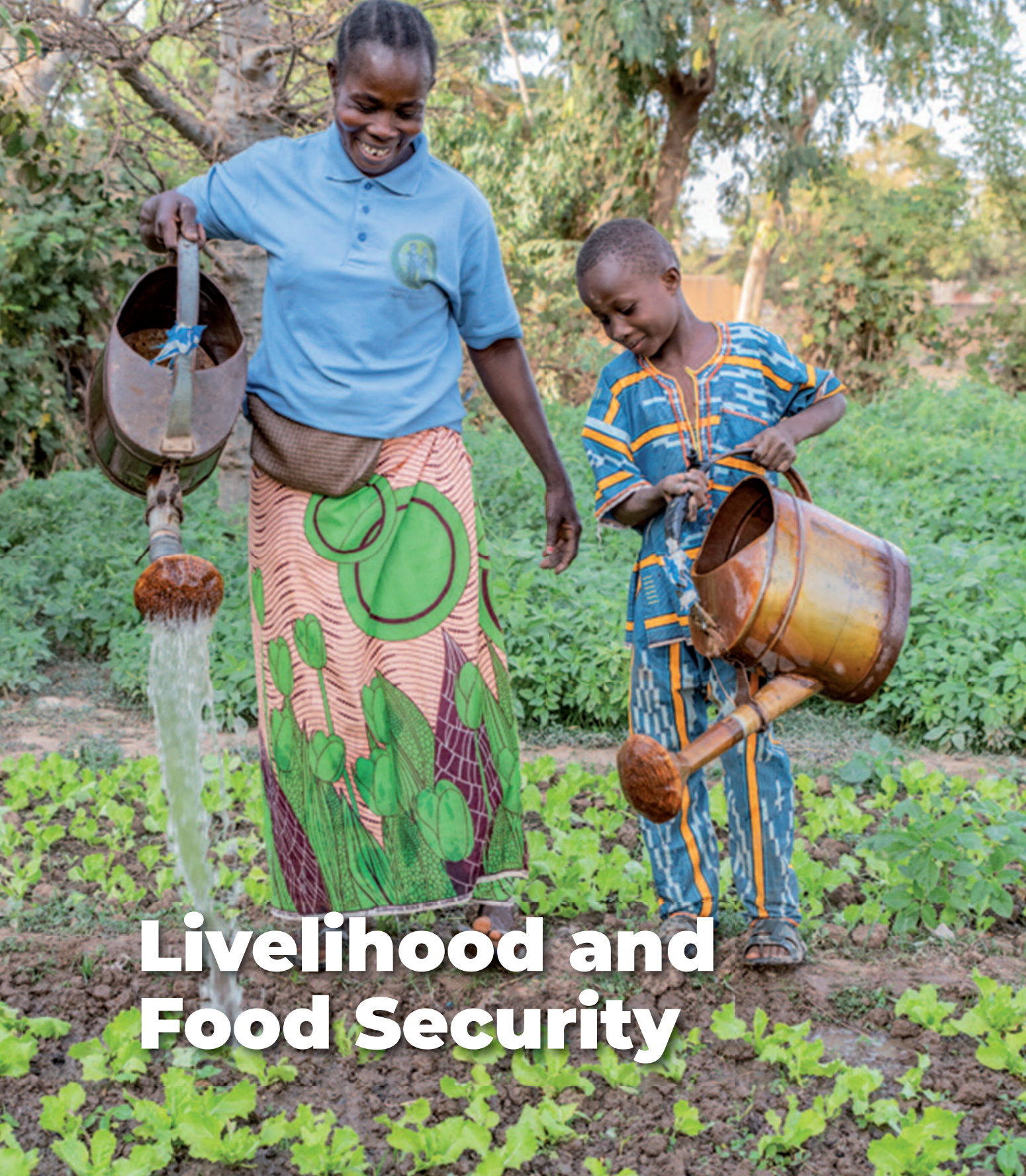
**30,491** Children benefited from Vitamin A



**22** Boreholes/Wells realized to facilitate access to potable water for **3,336** participants together with their communities.

**40** Latrines, Toilets, Sinks realized on behalf of **14,581** participants together with their communities.





**Livelihood and  
Food Security**





# Livelihood and Food Security

Compassion International Burkina Faso prioritizes livelihood and household food security by supporting registered children, youth, and caregivers with food assistance during lean seasons, boosting agricultural productivity, and offering tailored education aligned with individual talents to foster income-generating activities (IGA) and savings groups.

Burkina Faso faces severe impacts from the global food crisis, intensified by insecurity, rising food prices, climate change, and the lingering effects of COVID-19. These challenges undermine children's physical and cognitive development and affect caregivers' economic stability.

In response, Compassion's economic development model includes:

- Vocational and business training to enhance employability and support savings group initiatives.
- Access to financial tools through church partners to improve household savings via

women's groups, youth savings groups, and community cooperatives.

- The ultimate goal is to increase household income and promote financial resilience.

Compassion also strengthens disaster response and resilience by protecting affected participants before, during, and after crises. Efforts include:

- Emergency relief (food, shelter, healthcare, WASH, basic services)
- Rehabilitation (infrastructure, psychosocial support, family resilience programs)
- Risk management (prevention and preparedness in vulnerable zones)
- Sustainable development to reduce dependence on emergency aid

In terms of food security, the approach focuses on restoring and managing natural resources like soil and water to improve long-term agricultural productivity for families and communities.







# Livelihood and Food Security

## Disaster Relief Interventions



**3,000** Tons of Food distributed 9,750 Families including 1088 Internally Displaced Non-Program Families

**4,764** Caregivers trained on best agricultural practices



**3,569** Caregivers trained on Income Generating Activities

**3,569** Caregivers received revolving funds to launch Income Generating Activities



**365.85** Tons of Fertilizers and Seeds distributed

**4,764** Families

## Livelihood and Food Security



1,251 Highly Vulnerable Children received food assistance for 12 months



**428** Saving Groups developed including

**XOF 253,362,488** Mobilized

## Lean Season Relief Interventions



**33** tons of fertilizers distributed **575** farming caregivers  
**143** hectares of agricultural productivity increased



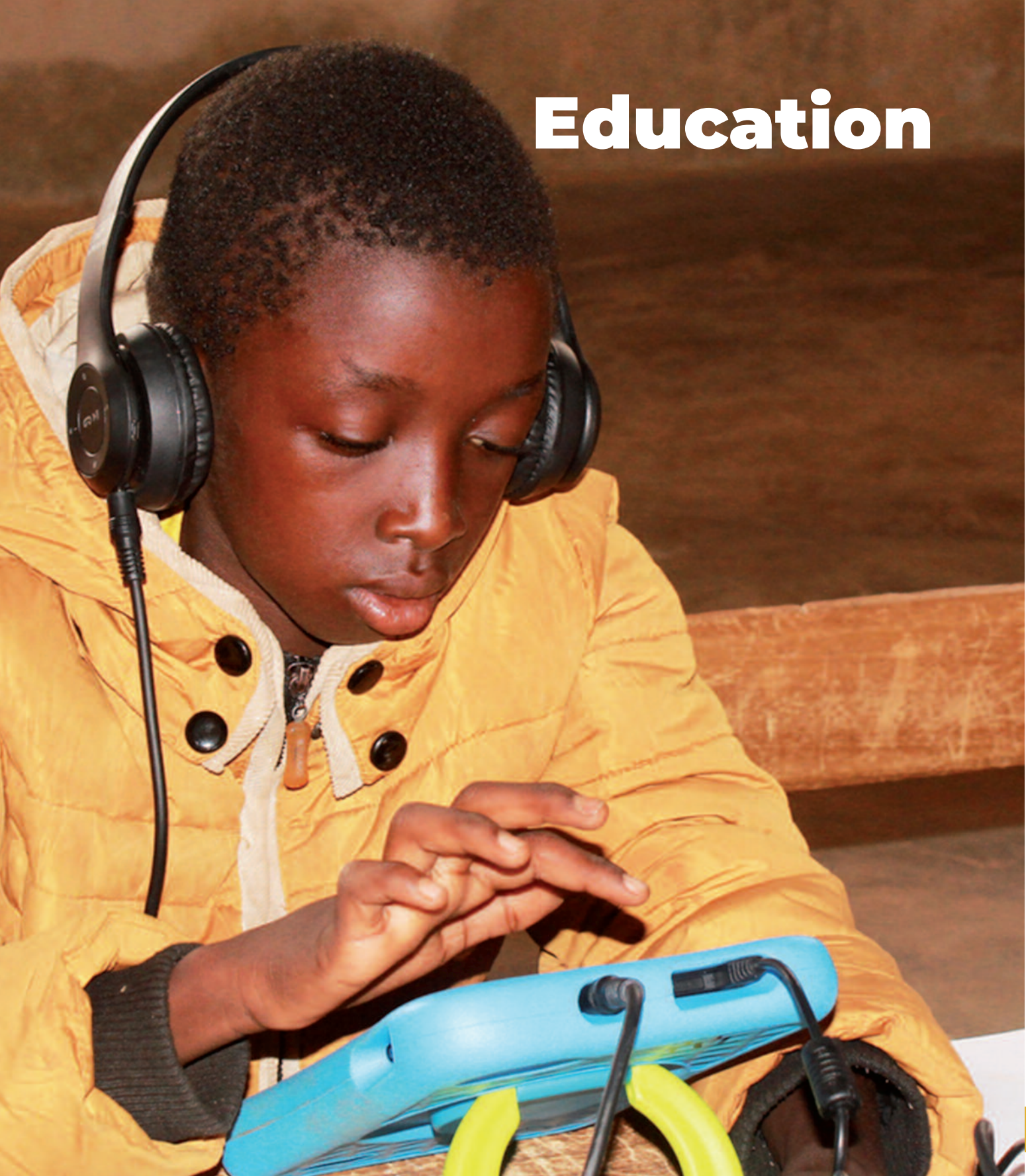
**3** tons of seeds distributed

**316** tons of grains harvested including maize and cowpea



**85** beneficiaries trained on Farmer Business School Approach

# Education







## Education

# A Partnership to Strengthen Education for Children in Emergency Situations

## Reducing Inequalities in Education

To reduce educational inequalities and support children in emergency situations, Compassion International Burkina Faso partners with the Kamalpa Association to implement an innovative digital learning solution in Child and Youth Development Centers (CYDC). The Kamalpa program offers interactive, customized lessons for elementary students from Year 1 to Year 6, helping them catch up academically and build confidence. A pilot phase was helpful to equip 29 CYDCs with tablets and digital licenses, enabling over 300 children to benefit from technology-enhanced learning. The initiative has led to improved academic performance, increased motivation, and the reinstatement of internally displaced children into education, as illustrated by the powerful testimony of a student whose academic journey was revived through Kamalpa.

### A Powerful Testimony

**The testimony of Abdoul Fatao, a young student, perfectly illustrates the impact of the Kamalpa solution.** Having repeated year 1 three times, Abdoul Fatao was struggling with learning, he eventually dropped out of school. Thanks to the Kamalpa Solution, he received a tailored support, allowing him to successfully resume his studies.

*"I repeated Year1 several times, but I couldn't understand the lessons, so I dropped out of school. However, with the introduction of the Kamalpa solution at the CYDC, the Team Leader suggested to my caregivers to enroll me for the Kamalpa interacting training sessions. In addition to traditional lessons, I had access to Kamalpa interactive courses. In less than three months, my academic performance started to improve. By the end of the year, I had an average score of over 7/10. Now, I can finally continue my studies without major challenges."*

This testimony highlights the transformative potential of the Kamalpa solution in changing the lives of vulnerable children, offering them a real opportunity for academic success and a brighter future.







ST/PJ Troupe Eben-Ever / COEJ BE / 0463 HOUET



# Promotion of Cultural Diversity by Child and Youth Development Centers

To promote cultural diversity and holistic development, some Church partners in Burkina Faso have founded traditional music and dance bands. These groups give the way to Program youth to express their talents, embrace their cultural heritage, and gain recognition at regional and national levels, including the prestigious National Culture Week. In 2024, four CYDC bands, such as Salem, Soumouso, Eben Ezer, and others from the Central Plateau region, earned awards and honors for their performances. These achievements not only highlight the artistic potential of the youth but also reflect Compassion International's strong commitment to youth empowerment and cultural preservation in Burkina Faso.









# CIBF 20th Anniversary Celebration

In 2024, Compassion International Burkina Faso (CIBF) celebrated its 20th anniversary under the theme “20 Years of Holistic Child and Youth Development in Burkina Faso: Resilience and Sustainability for Lasting Impact.” The celebration featured several key events, including a recognition ceremony for church leaders, the inauguration of a National Directors’ Hall, a thematic conference on sustainable child and youth development, a high-level official cere-

mony with government Official, a gala to honor strategic partners, and a botanical garden inauguration in line with national reforestation efforts. The anniversary was a time of reflection, gratitude, and renewed commitment to releasing children from poverty and building a sustainable future. The Ministers in charge of humanitarian affairs, national education and environment were respectively the Patron and the Sponsors of this historic commemoration.









# The School of Husbands and Future Husbands

Compassion International Burkina Faso (CIBF) launched the School of Husbands and Future Husbands initiative to promote men's active involvement in family and social well-being. Inspired by a national health initiative, the main goal of this program is to encourage responsible parenting, improved communication, and shared household responsibilities. A pilot phase from November 2023 to July 2024 in the Center West region resulted in the creation of 14 schools and the training of over 300 men. The initiative fosters social transformation, gender equality, youth leadership, and community engagement. With positive outcomes, this program is set for expansion, reinforcing CIBF's commitment to building stronger, more resilient families and communities.







# Financial Statements



**XOF 16,073,551,118**

Child Sponsorship  
Support Fund



**XOF 3,289,689,537**

Complementary  
Interventions



**XOF 12,842,000**

Ongoing Education



**XOF 227,027,162**

Health Reimbursement Funds



**XOF 3,846,453,670**

GIFTS Beneficiaries, family  
project & Christmas



**XOF 81,440,500**

Support to people living with HIV



**XOF 833,991,120**

Child Survival Funds



**XOF 79,722,999**

Child Project Launch



**XOF 173,404,250**

Ongoing Highly Vulnerable  
Children and HVC - cpr



**XOF 26,473,338**

Desaster Relief Funds

## TOTAL FUND RECEIVED BY CIBF IN FY24

ITEM	TOTAL
Investment FY24	<b>24,644,595,695</b>
Operating Budget	<b>2,511,770,840</b>
Total Fund Received by CIBF in FY24	<b>27, 156,366,536</b>

## FCPs' CONTRIBUTION IN 2024

QUARTERLY	FCP CONTRIBUTION IN XOF
Quarter 1	<b>44,785,400</b>
Quarter 2	<b>82,281,650</b>
Quarter 3	<b>55,773,850</b>
Quarter 4	<b>37,849,766</b>
<b>TOTAL</b>	<b>220,690,666</b>







**Compassion International Burkina Faso**

**Boulevard Thomas Sankara - Secteur 28 - Porte 3092**

**11 BP 499 Ouagadougou 11**

**Tél.: +226 35 36 99 17 / 25 36 99 19 / 76 62 71 32**

**Email : [compassionburkinafaso@bf-ci.org](mailto:compassionburkinafaso@bf-ci.org)**